

CULTURE OF KINDNESS

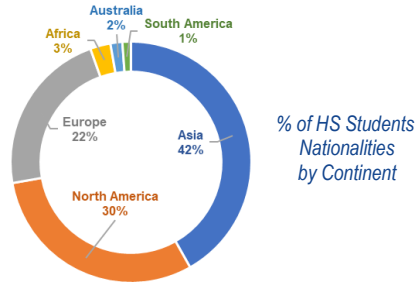
HIGH SCHOOL PROFILE

2024-2025

Dubai American Academy (DAA) is a vibrant international community, deeply rooted in a culture of kindness, that creates and empowers leaders and independent thinkers with integrity, character and drive.

School Community

DAA High School has an enrollment of over 1,300 students from 95 countries. Our campus, accommodating approximately 3,300 students, is a purpose-built facility with leading edge amenities to support student development. The parents of DAA students come from a variety of business, governmental and other professional backgrounds.



Academic Program

DAA provides a college-preparatory program. The language of instruction is English. Students enroll in a maximum of eight courses in a 8-block schedule. Graduation requirements include a minimum of 22 credits and community service for each year at DAA. Students are also given the option to enroll in the full International Baccalaureate (IB) Diploma, IB Certificate courses and Advanced Placement (AP) courses. In addition to 37 college preparatory classes, we offer 48 higher level (HL) and standard level (SL) IB classes, 13 AP class options and 47 elective classes from a range of subjects/disciplines. For courses offered, please review the [Course Offerings](#) and for course descriptions, please review the [Program of Studies](#).

School Calendar

Our school year, consisting of two semesters, runs from late August to the end of June.

Graduation Requirements

A minimum of 22 credits is required for graduation and credits are issued by semester. One-half credit (0.5) is awarded for the successful completion of each semester course with a minimum passing mark of D-. One credit (1.0) is awarded for the successful completion of each full year course passed. Every student who graduates from DAA will receive an American High School Diploma. Students who complete the full IB Diploma course of study and pass will also receive the IB Diploma. Specific credit requirements are listed to the right.

Subject	Credits	Subject	Credits
English	4.0	PE / Health	2.0
Mathematics	3.0	Fine / Performing Arts	0.5
Science	3.0	Electives	5.5
Social Studies	2.0	Arabic*	4.0
Foreign Language	2.0	Islamic*	2.0

*Per UAE government regulations

Grading Scale

A+	4.0	97-100
A	4.0	93-96
A-	3.7	90-92
B+	3.3	87-89
B	3.0	83-86
B-	2.7	80-82
C+	2.3	77-79
C	2.0	73-76
C-	1.7	70-72
D+	1.3	67-69
D	1.0	65-66
D-	0.5	Below 65
E/F	0.0	Below 60

Standardized Test Results 2023-2024

SAT Results (G11 & G12)

Test Takers	306
Mean EBRW	620
Middle 50%	550-690
Mean Math	617
Middle 50%	532-710

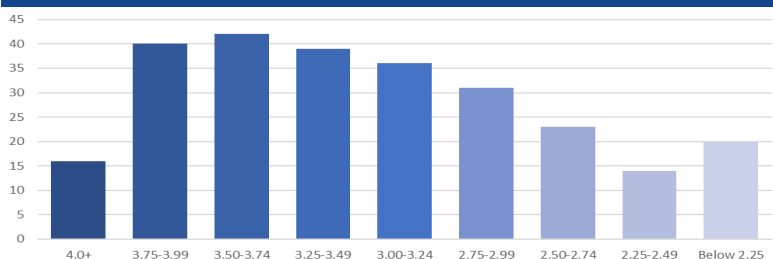
AP Results (G9 to G12)

Academic Year	No. of Exams	No. of Test Takers	Pass Rate (%3+)	Worldwide Pass Rate (%3+)
2023-2024	10	360	79%	69%
2022-2023	11	285	82%	63%
2021-2022	6	199	70%	61%
2020-2021	3	166	75%	56%

IB Results

Class Year	No. of Test Takers	Pass Rate	% of Senior in IB Diploma	Worldwide Mean Total IB Points	DAA Mean Total IB Points
2024	208	96%	63%	30	34
2023	225	98%	65%	30	33
2022	257	97%	60%	32	35
2021	262	100%	66%	33	34
2020	217	98%	60%	33	35

GPA Distribution: Class of 2024



Please note that all IB & AP courses have a 0.25 weight added to the standard weighting.

AFFILIATIONS

Council of International Schools (CIS)

New England Association of Schools and Colleges (NEASC)

International Baccalaureate Diploma (IBO)

Advanced Placement (AP)

CEEB: 697012

COUNSELING TEAM

JoAnn Porterfield
j.porterfield_daa@gemsedu.com

G9
Last Name: A-Z

Katrina Watson
k.watson_daa@gemsedu.com

G10-12
Last Name: A-At

Nedra Brown
n.brown_daa@gemsedu.com

G10-12
Last Name: Au-Elsal

Sulakshana Divekar
s.divekar_daa@gemsedu.com

G10-12
Last Name: Elsam-Kabk

Fify Kassem
f.kassem_daa@gemsedu.com

G10-12
Last Name: Kabl-Moul

Jeff Chelin
j.chelin_daa@gemsedu.com

G10-12
Last Name: Moum-Sh

Trisha Johnson
t.johnson_daa@gemsedu.com

G10-12
Last Name: Si-Z
Head of Counseling

Jennifer Gaffney
j.gaffney_daa@gemsedu.com

Wellbeing
Advisor

Jon Gatus
j.gatus_daa@gemsedu.com

Department
Secretary

UNIVERSITY VISITS

Please scan
or
click on the QR code.



College and University Matriculation, Class of 2020-2024

UNITED STATES

American University
 Arizona State University Campus Immersion
 Arizona State University-Tempe
 Arizona State University-West
 Babson College
 Bard College
 Barry University
 Bentley University
 Berkeley College of Music
 Blinn College Station
 Boston College
 Boston University
 Brandeis University
 Brown University
 Bryant University
 California State University-Fullerton
 Carnegie Mellon University
 Case Western Reserve University
 Claremont McKenna College
 Clark University
 Colgate University
 Colorado State University-Fort Collins
 Columbia University in the City of New York
 Cornell University
 DePaul University
 Emerson College
 Florida International University
 Fordham University
 Fresno State University
 Front Range Community College - Larimer Campus
 George Mason University
 George Washington University
 Georgetown University
 Georgia Institute of Technology-Main Campus
 Georgia Southern University
 Georgia State University
 Hampton University
 Hofstra University
 Howard University
 Illinois Institute of Technology
 Indiana State University
 Indiana University-Bloomington
 Indiana University-Purdue University-Indianapolis
 Johns Hopkins University
 Kean University
 Knox College
 Las Positas Community College
 Lehigh University
 Life University
 Loyola Marymount University
 Loyola University Chicago
 Lynn University
 Manhattan School of Music
 Marist College
 Marymount University
 Merlo College
 Miami University-Oxford
 Michigan State University
 Montgomery College
 New York University
 North Carolina State University at Raleigh
 Northeastern University
 Ohio State University-Main Campus
 Ohio Wesleyan University
 Oregon State University
 Otis College of Art and Design
 Pace University
 Pasadena City College
 Pennsylvania State University-Main Campus
 Pennsylvania State University-Penn State Altoona
 Pennsylvania State University-Penn State York
 Princeton University
 Purdue University-Main Campus
 Queens University of Charlotte
 Rensselaer Polytechnic Institute
 Rhode Island School of Design
 Rochester Institute of Technology
 Rutgers University
 Rutgers University-New Brunswick
 Rutgers University-Newark
 San Diego Miramar College
 San Diego State University
 Santa Monica College
 Santiago Canyon College
 Savannah College of Art and Design
 Skidmore College
 Stanford University
 Suffolk University
 Syracuse University
 Tallahassee Community College
 Temple University
 Texas A & M University-College Station
 Texas Christian University
 The New School
 The Pennsylvania State University
 The University of Tampa
 The University of Texas at Austin
 The University of Texas at Dallas
 The University of Texas at San Antonio
 Tufts University
 United States Merchant Marine Academy
 University at Buffalo
 University of Alabama at Birmingham
 University of Arizona
 University of California-Berkeley
 University of California-Davis
 University of California-Irvine
 University of California-Los Angeles
 University of California-Riverside
 University of California-San Diego
 University of California-Santa Barbara
 University of Chicago
 University of Cincinnati-Main Campus
 University of Colorado Boulder
 University of Dayton
 University of Detroit Mercy
 University of Florida
 University of Hawaii-West Oahu
 University of Houston

University of Illinois Chicago
 University of Illinois Urbana-Champaign
 University of La Verne
 University of Maryland-College Park
 University of Massachusetts-Amherst
 University of Miami
 University of Michigan-Ann Arbor
 University of Michigan-Dearborn
 University of Nebraska-Lincoln
 University of Nevada-Las Vegas
 University of North Carolina at Chapel Hill
 University of North Carolina at Charlotte
 University of Notre Dame
 University of Pennsylvania
 University of Pittsburgh-Pittsburgh Campus
 University of Rochester
 University of South Florida-Main Campus
 University of Southern California
 University of Southern Mississippi
 University of Washington-Seattle Campus
 Virginia Polytechnic Institute and State University
 Wagner College
 Wake Tech
 Wake Technical Community College
 Washington State University
 Wentworth Institute of Technology

UNITED KINGDOM

Aston University, Birmingham
 Barts and The London School of Medicine & Dentistry
 Birkbeck, University of London
 Bournemouth University
 Brunel University London
 Cardiff University
 City of London College
 City, University of London
 Durham University
 Durham University International Study Centre
 Exeter College
 Heriot-Watt University
 Hull International Business School
 Imperial College London
 INTO City, University of London
 INTO Lancaster University
 INTO London
 INTO Queen's University Belfast
 Istituto Marangoni London
 King's College London, University of London
 Kingston College
 Kingston University
 Lancaster University
 Leeds Beckett University
 Leeds International Study Centre (progression to University of Leeds)
 Leeds Trinity University
 London Metropolitan University
 Loughborough University
 Manchester Metropolitan University
 Middlesex University
 NCUK
 Newcastle University
 Nottingham Trent University
 Oxford Brookes University
 Queen Mary University of London
 Queen's University Belfast
 Regent's University London
 Richmond, The American International University in London
 Royal Holloway, University of London
 Solent University (Southampton)
 St Mary's University, Twickenham
 The University of Edinburgh
 UCL (University College London)
 University of Aberdeen
 University of Bath
 University of Birmingham
 University of Bristol
 University of Buckingham
 University of Central Lancashire
 University of Edinburgh
 University of Essex
 University of Exeter
 University of Glasgow
 University of Kent
 University of Leeds
 University of Leicester
 University of London
 University of Manchester
 University of Nottingham
 University of Reading
 University of Sheffield
 University of Sheffield International College
 University of Southampton
 University of St Andrews
 University of Stirling
 University of Surrey
 University of Sussex
 University of the Arts London
 University of Warwick
 University of Westminster, London
 University of Winchester
 University of York

EUROPE

3iS- The Institut International de l'Image et du Son
 Aalto University
 Alfonso X el Sabio University
 Amsterdam Fashion Academy
 Amsterdam University of Applied Sciences
 Business and Hotel Management School Luzern
 Catholic University of Portugal
 CEU San Pablo University
 Charles University - Faculty of Medicine in Hradec Kralove
 Delft University of Technology
 Dublin International Study Centre
 eada business school
 École hôtelière de Lausanne (EHL)
 EDHEC Business School
 EM Lyon
 Erasmus University Rotterdam
 ESADE Business School
 ESCP Business School
 Escuela Superior de Ingenieros Comerciales (ESIC university Madrid)
 ESIC
 ESIC Business & Marketing School
 Esic University
 ESSEC Business School
 EU BARCELONA
 EU Business School
 European School of Economics
 FH Aachen - University of Applied Sciences
 Geneva Business School
 Glion Institute of Higher Education
 Grenoble Ecole de Management
 Hanze University of Applied Sciences
 Howest University of Applied Sciences
 Humanitas University
 IE University
 IE University - Madrid Campus
 Institut Quimic Sarria
 International university of Monaco
 Istituto Marangoni
 Jacobs University
 KTH Royal Institute of Technology
 Le Cordon Bleu
 Leiden University
 Les Roches
 Lund University
 Maastricht Hotel Management School
 Maastricht University
 Masaryk University
 Medical University of Warsaw
 Milan Business School (UIBS)
 Murdoch University Dubai
 NHL Stenden
 NHL Stenden University of Applied Sciences
 Nuova Accademia di Belle Arti (NABA)
 Nyerode Business University
 Oslo School of Architecture and Design
 Panthéon-Assas University Paris II
 Paris College of Art
 Polimoda
 Politecnico di Milano
 Queen Mary University of London
 Royal College of Surgeons
 SBS Swiss Business School, Barcelona
 School of Medicine - Frankfurt - European University Cyprus
 Scuola Politecnica di Design
 Semmelweis University
 Stockholm University
 Swiss Federal Institute of Technology Lausanne
 The American Business School of Paris
 The American University of Paris
 The Hague University of Applied Sciences
 Tilburg University
 Trinity College Dublin
 TU Eindhoven
 Universidad Católica de Murcia
 Universidad de Navarra
 Universidad Europea de Madrid
 Universidad europea de Valencia
 Universidade De Evora
 Università Bocconi
 Università Cattolica del Sacro Cuore
 Université de Liège
 University College Cork
 University College Dublin
 University College Groningen
 University College Twente
 University of Amsterdam
 University of Copenhagen
 University of Graz
 University of Groningen
 University of Navarra
 University of Padova
 University of Pavia
 University of Piraeus
 University of Twente
 University of Vienna
 Utrecht University
 Vita-Salute San Raffaele University
 Vrije Universiteit Amsterdam
 Webster University
 Willem de Kooning Academie

CANADA

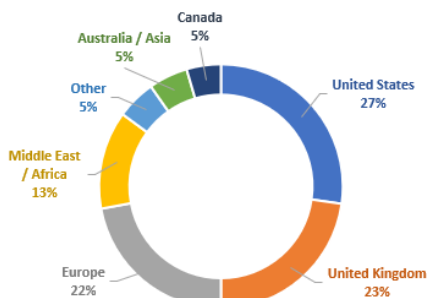
Brock University
 Carleton University
 Concordia University
 Huron University
 Lakehead University
 McGill University
 OCAD University
 Queen's University
 Ryerson University
 Simon Fraser University (SFU)
 St Francis Xavier University (SFX)
 Thompson Rivers University (TRU)
 Toronto Metropolitan University
 University of Alberta
 University of British Columbia (UBC)
 University of Calgary
 University of Montreal
 University of Ottawa
 University of the Fraser Valley (UFV)
 University of Toronto
 University of Waterloo
 Western University
 York University

MIDDLE EAST / AFRICA

Ajman University
 American University in Dubai
 American University of Beirut
 American University of Sharjah
 Amity University Dubai
 Canadian University Dubai
 Emirates Aviation University
 Emirates Flight Training Academy
 European University Cyprus (EUC)
 Gulf Medical University
 Gulf University for Science and Technology
 Heriot-Watt University Dubai
 Higher Colleges of Technology
 Istituto Marangoni
 Khalifa University of Science and Technology
 Lebanese American University
 Middlesex University Dubai
 Mohammed Bin Rashid University Of Medicine And Health Sciences
 New York University Abu Dhabi
 Paris-Panthéon-Assas University
 RCSI Bahrain
 Rochester Institute of Technology - Dubai
 Royal College of Surgeons Ireland in Bahrain
 SAE Institute Dubai
 The Emirates Academy of Hospitality Management
 United Arab Emirates University
 University Of Birmingham Dubai
 University of Dubai
 University of Sharjah
 University of Witwatersrand (WITS)
 University of Wollongong in Dubai (UOWD)
 Zayed University

AUSTRALIA / ASIA

Ajoo University
 Ashoka University
 Australian National University
 Chungang University
 Griffith College
 Hanyang University
 KAIST - Korea Advanced Institute of Science & Technology
 Keio University
 MAGES institute
 Manipal Academy of Higher Education
 Murdoch University
 National University of Singapore (NUS)
 Seoul National University
 Singapore Management University
 SKMKS
 Temple University Japan
 The University of Hong Kong
 University of Auckland
 University of Melbourne
 University of New South Wales (UNSW)
 University of Sydney
 University of Technology, Sydney
 University of Wollongong
 Waseda University
 Yonsei University
 Yonsei University - Underwood International College



Post High School University Matriculations (Class of 2024)

DAA students are limited in the number of applications they can submit. Admissions offices can be sure that an application from a DAA student is a well-considered one.